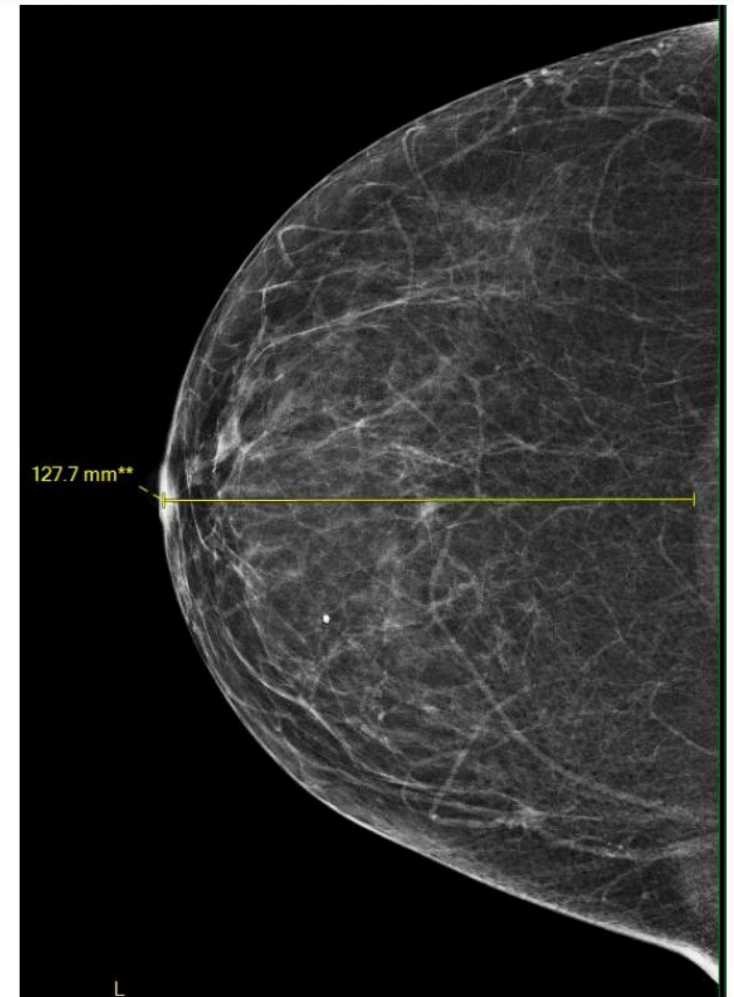




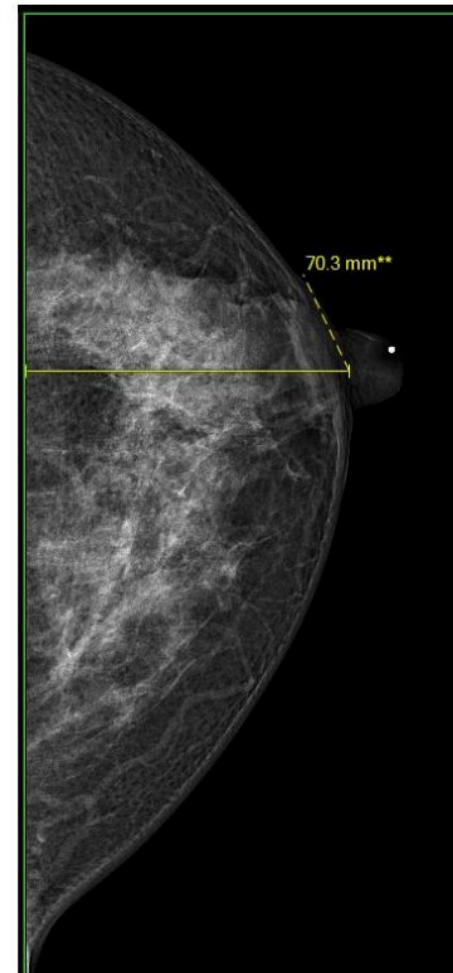
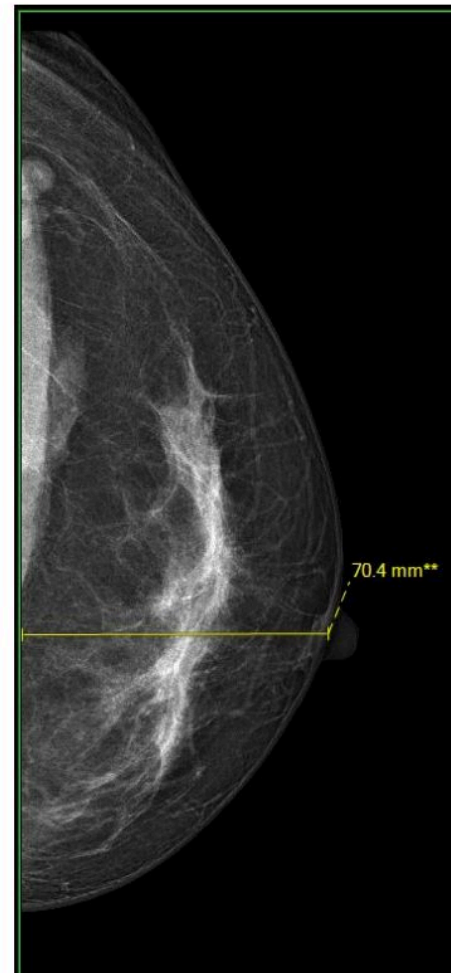
# PNL Measurements on CC and MLO

## PNL Measurement on CC

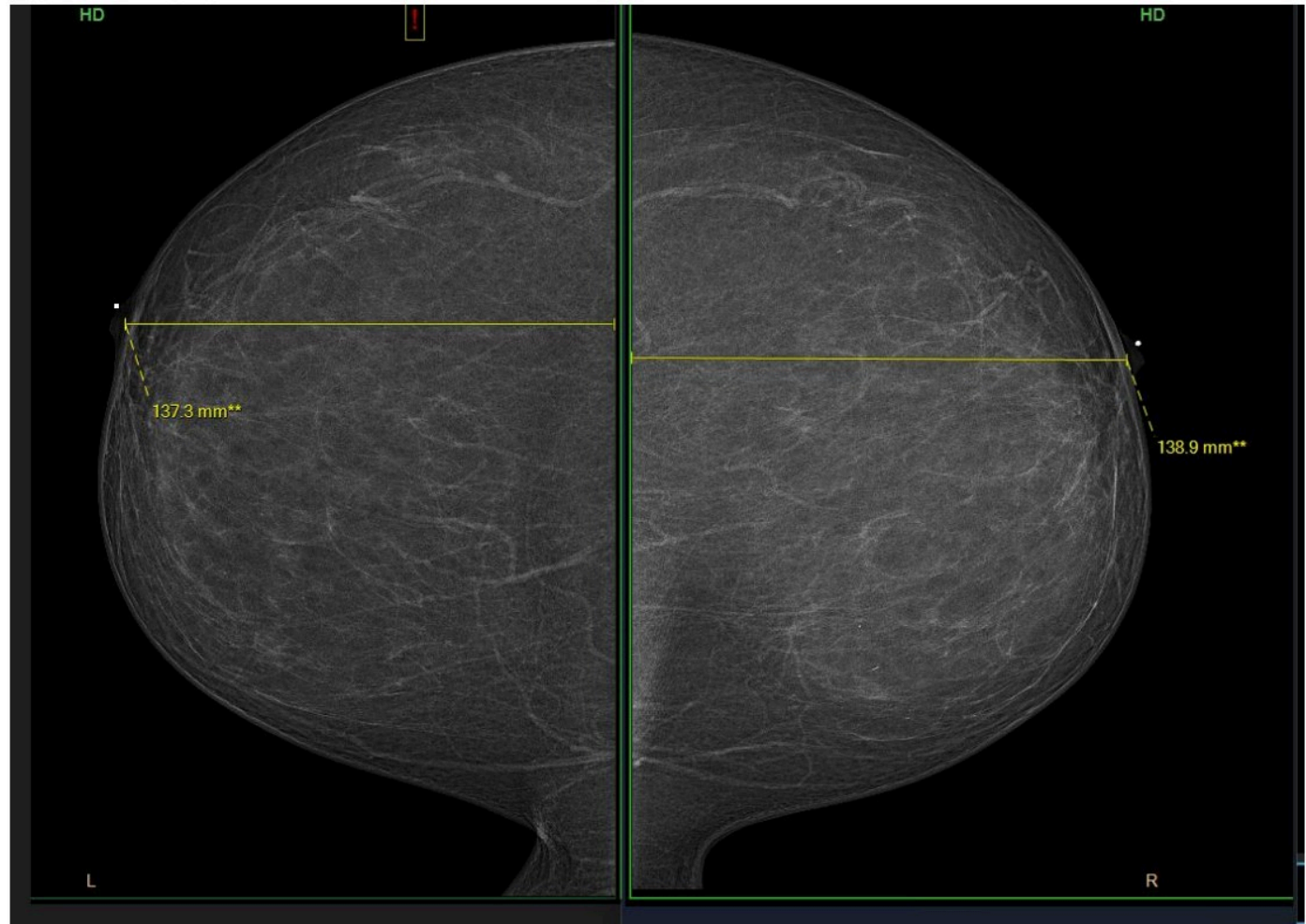
- PNL on CC view is measured along a line that extends directly posteriorly from the base of the nipple to the pectoral muscle or the edge of the film, whichever comes first<sup>1</sup>



## PNL Measurement on CC



## PNL Measurement on CC



## PNL Measurement on MLO

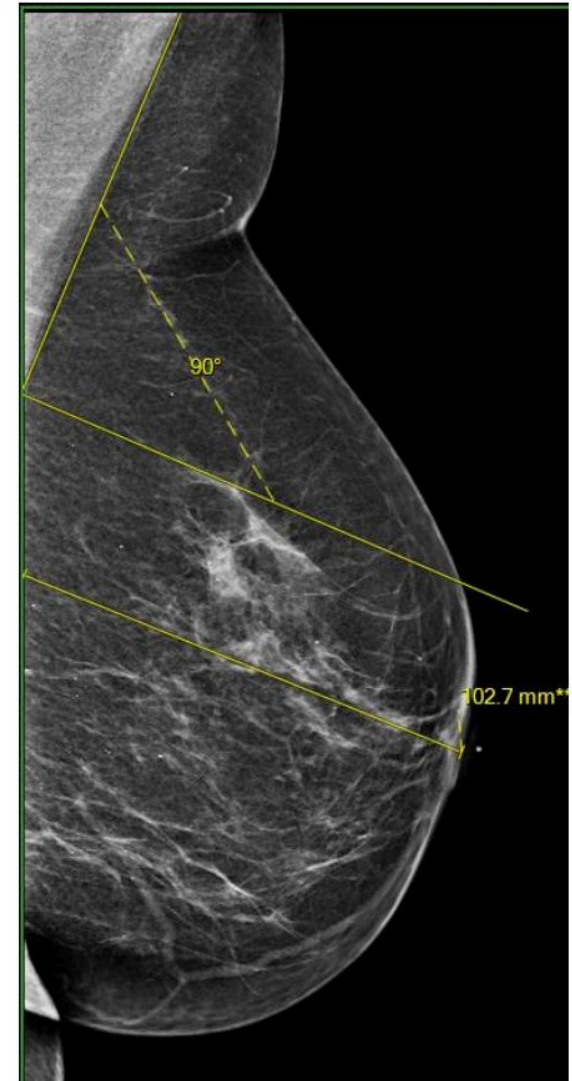
- To measure the PNL on MLO view, you need to accurately determine a 90-degree angle. This is done using the angle function on your PACS or Review Workstation (RWS) systems.
- The following slides show 3 ways to measure the PNL on MLO view when the pectoral muscle doesn't reach the nipple line.



## Option 1

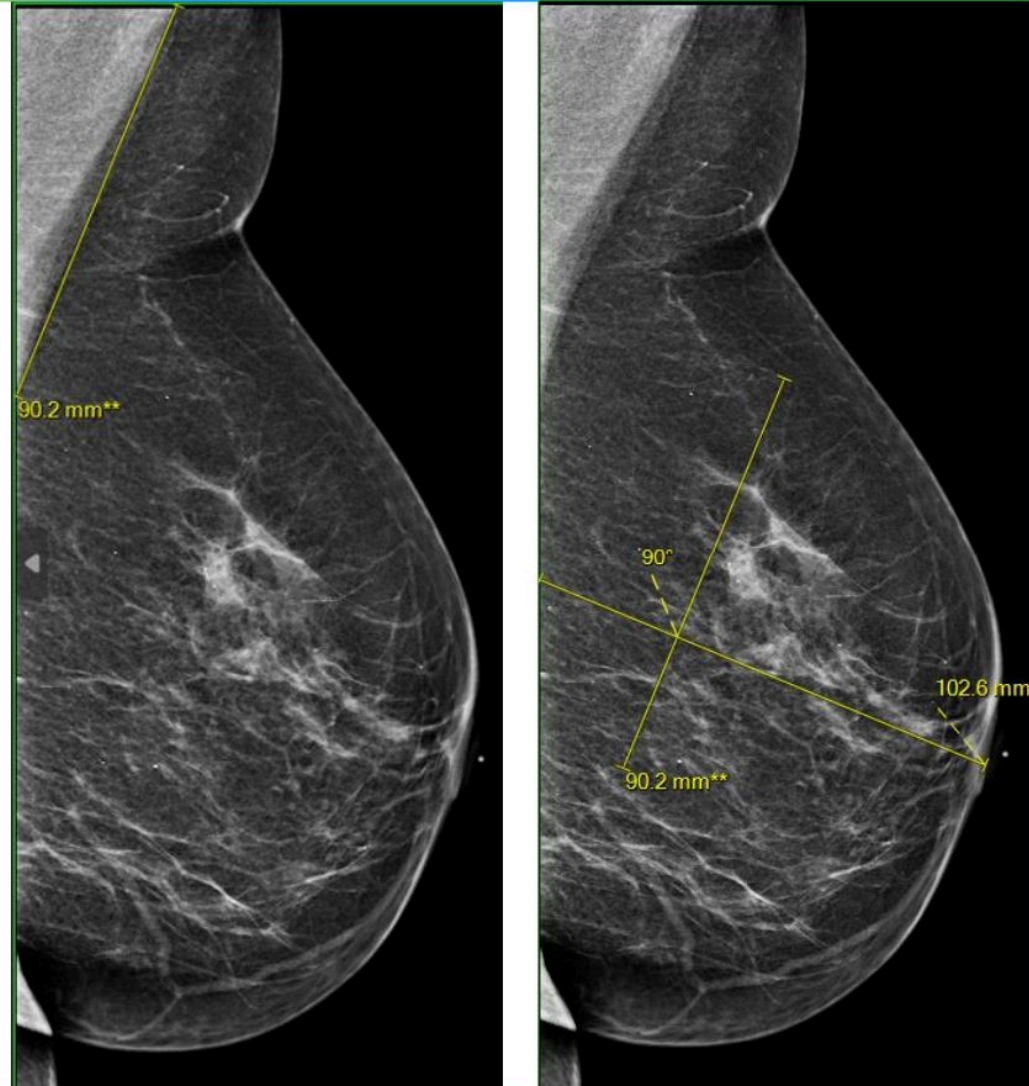
- Draw a line from the superior aspect of the pectoral muscle inferiorly along its anterior border to where the pectoral muscle ends at the edge of the image.
- Make a line from the base of the nipple back to the pectoral muscle OR the edge of the image if the pectoral muscle is short. You will slide that same line up to the pectoral muscle line to ensure the angle is 90 degrees. Once you confirm it is 90 degrees, slide this same line down to the base of the nipple and see what the distance is.

ACR LEARNING NETWORK



## Option 2

- Draw a line from the superior aspect of the pectoral muscle inferiorly along its anterior border to where the pectoral muscle ends at the edge of the image.
- Slide this line down and anteriorly to the mid breast. Draw a line from the base of the nipple back to the edge of the image, intersecting the other line at a 90-degree angle.



## Option 3

- Draw a line from the superior aspect of the pectoral muscle inferiorly along its anterior border to where the pectoral muscle ends at the edge of the image.
- Draw a line parallel and anterior to the first line and extend it down past the nipple line. Next, draw a line from the base of the nipple back to the edge of the image, intersecting the second line at a 90-degree angle.

