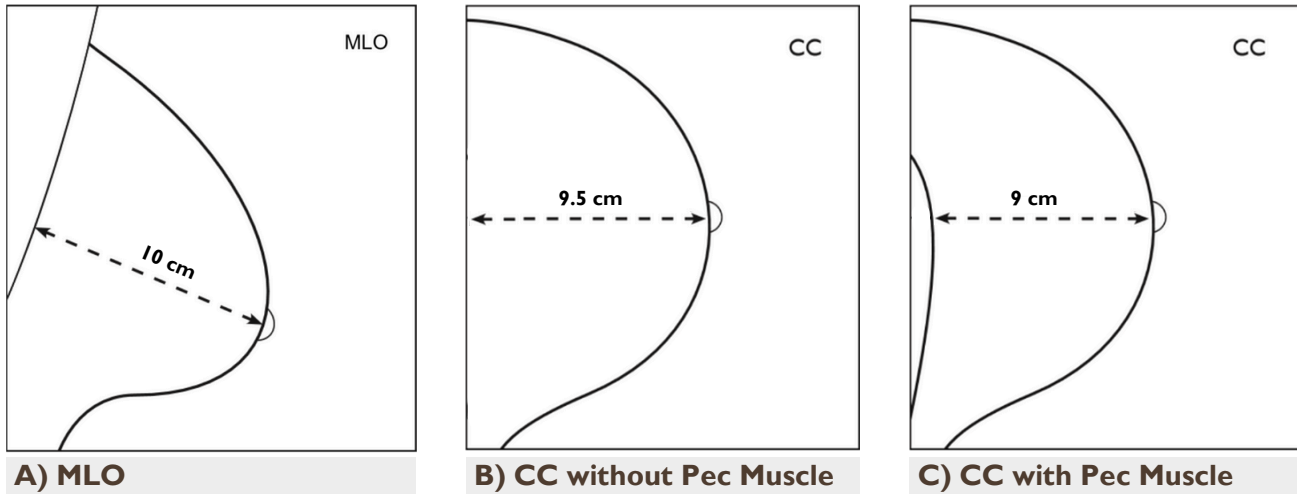


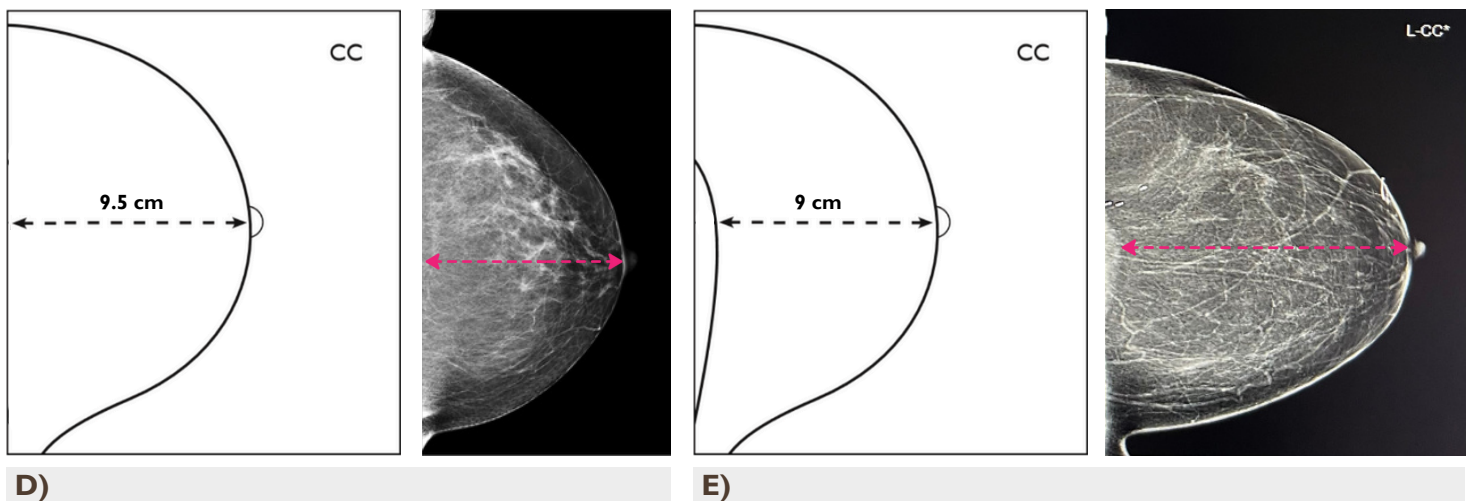
How to Measure the PNL

Example 1. PNL measurement on the CC must be within 1 cm of PNL measurement on the MLO.



Example 2. Measurement of the PNL on the CC

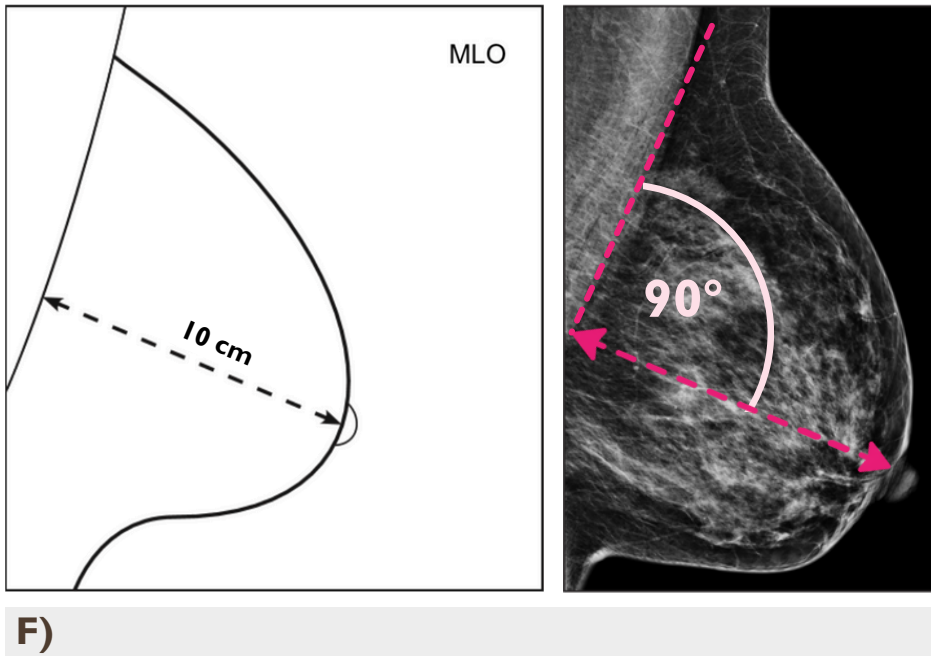
- Measurement is made from the base of the nipple to the edge of the image (*if pec muscle is not visualized*)
- Measurement is made from the base of the nipple to the anterior margin of the pectoralis muscle (*if visualized*)



How to Measure the PNL

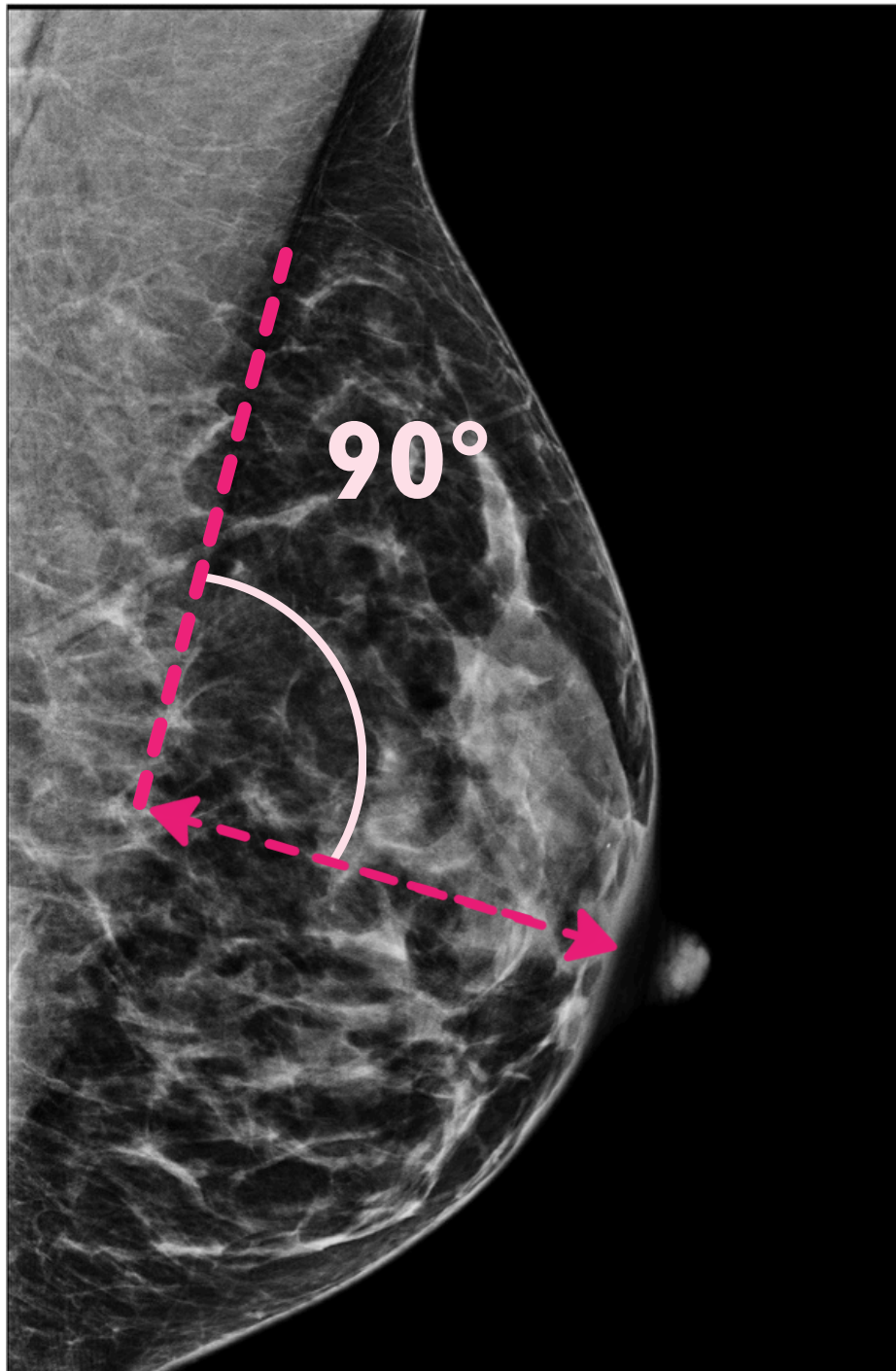
Example 3. Measurement of the PNL on the MLO

- Measure from the base of the nipple to the anterior margin of the pectoralis muscle where the intersection can be measured as a 90° angle.



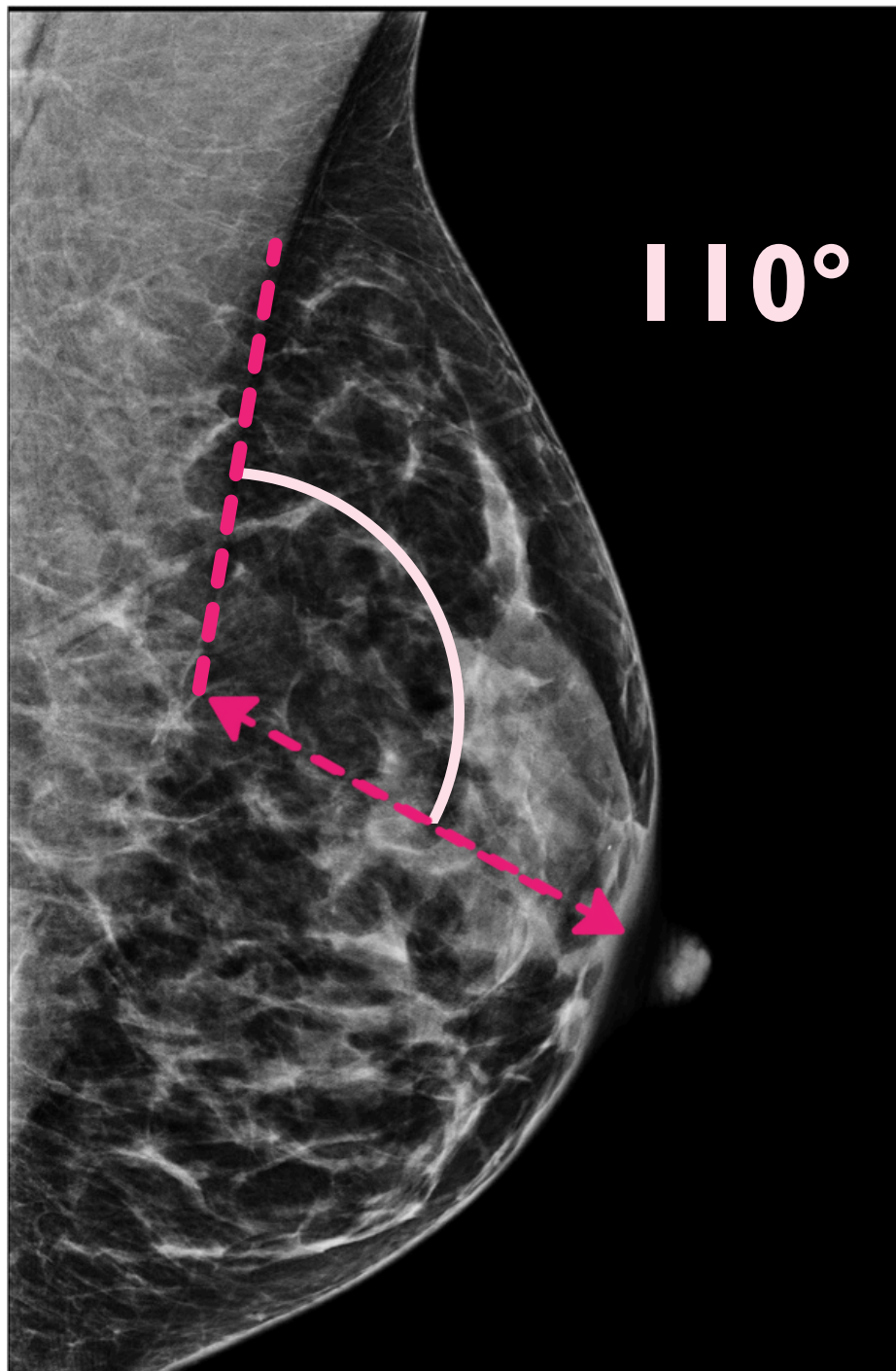
How to Measure the PNL

CORRECT METHOD FOR DETERMINING PNL ANGLE – 90°



How to Measure the PNL

INCORRECT METHOD FOR DETERMINING PNL ANGLE – TOO STEEP: 110°



How to Measure the PNL

INCORRECT METHOD FOR DETERMINING PNL ANGLE – NOT STEEP ENOUGH: 80°

